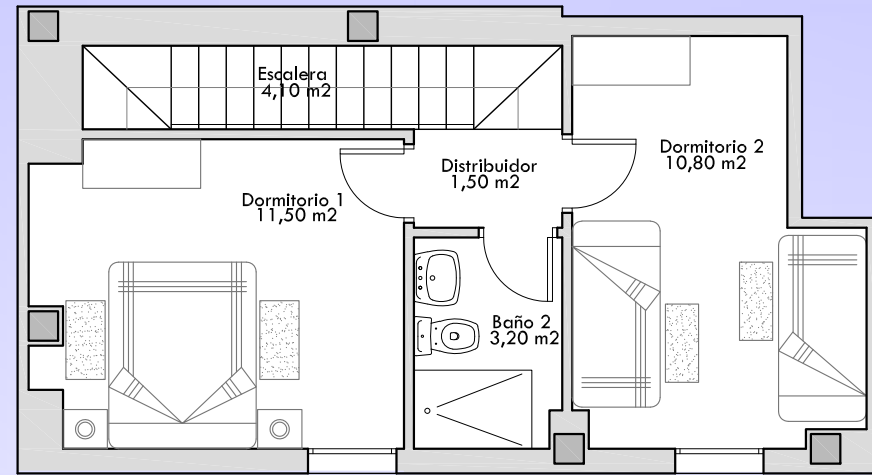
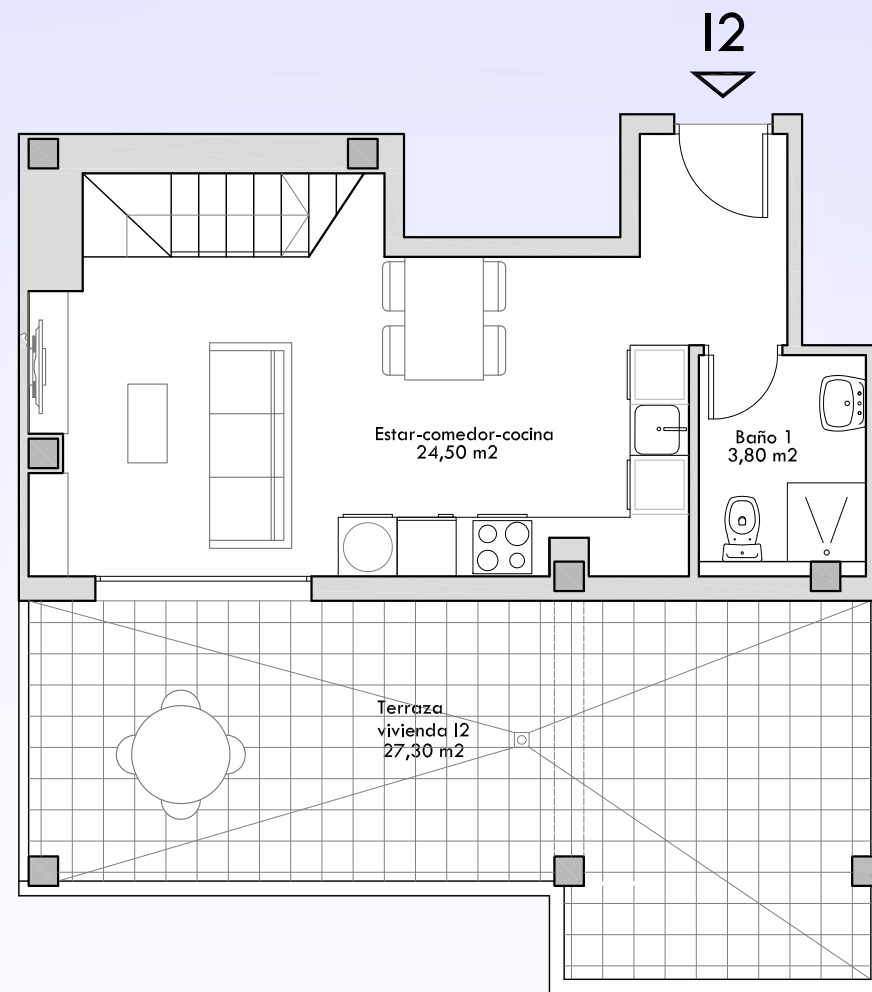


VIVIENDA I2. Planta 6ª y 7ª

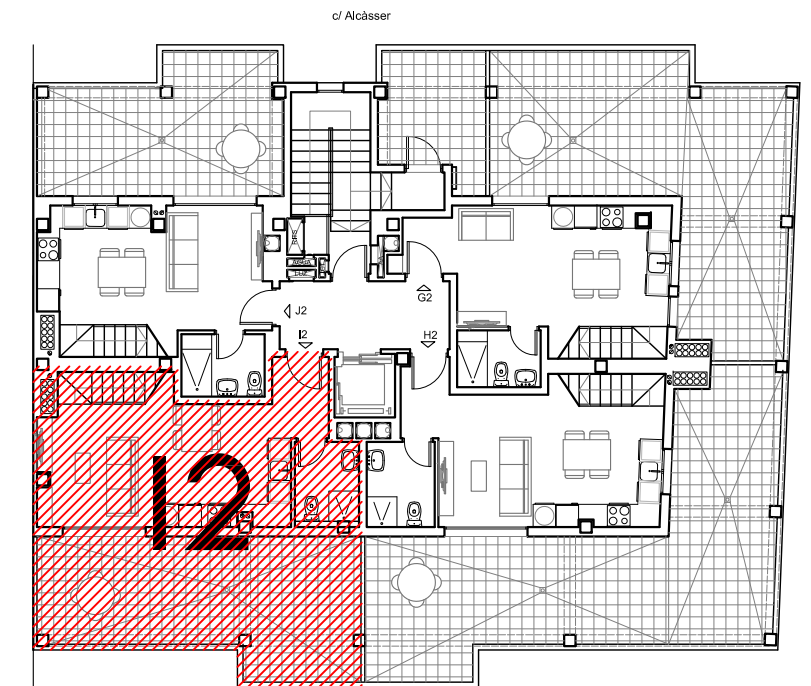
| | |
|-----------------------------|---|
| Superficie Útil | 59'40 m ² + 27'30 m ² (Terraza) |
| Superficie Construida | 74'36 m ² |
| P.P.E.C. | 10'64 m ² |
| Total Sup. Constr. con E.C. | 85'00 m ² |



Planta Primera



Planta Baja



ESCALA GRAFICA: 1/75

