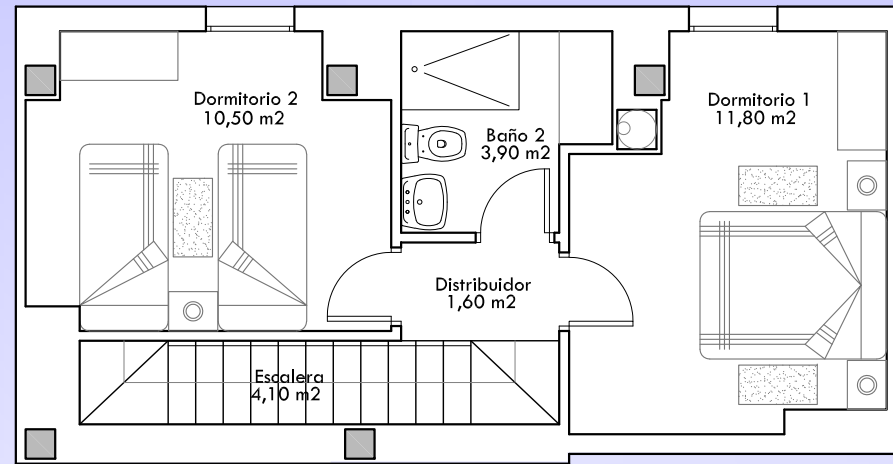
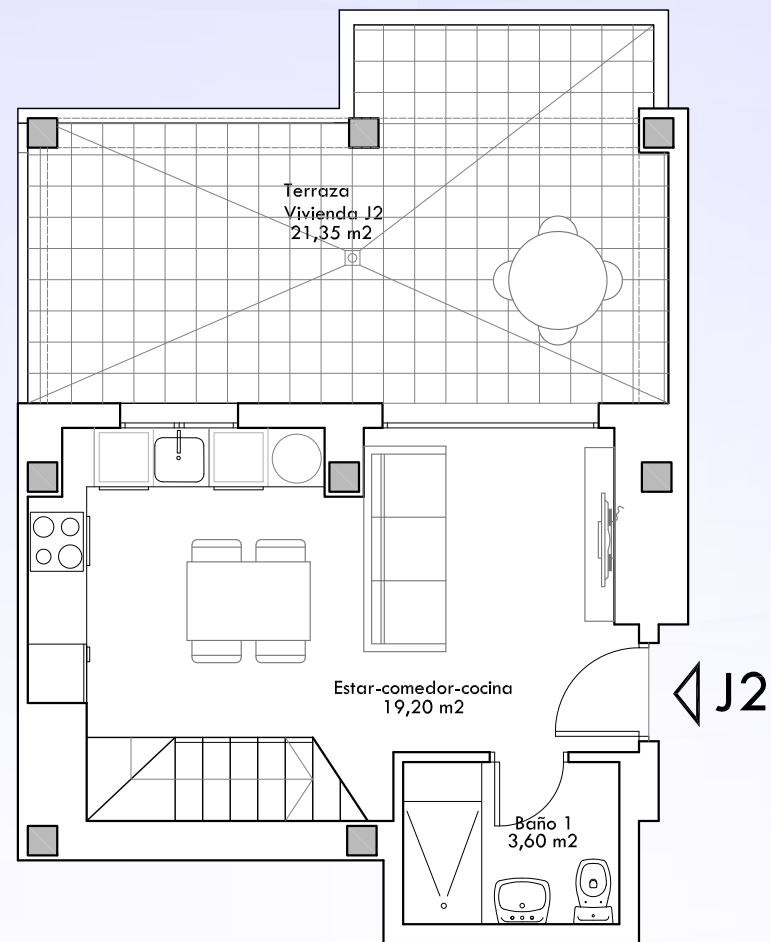


VIVIENDA J2. Planta 6ª y 7ª

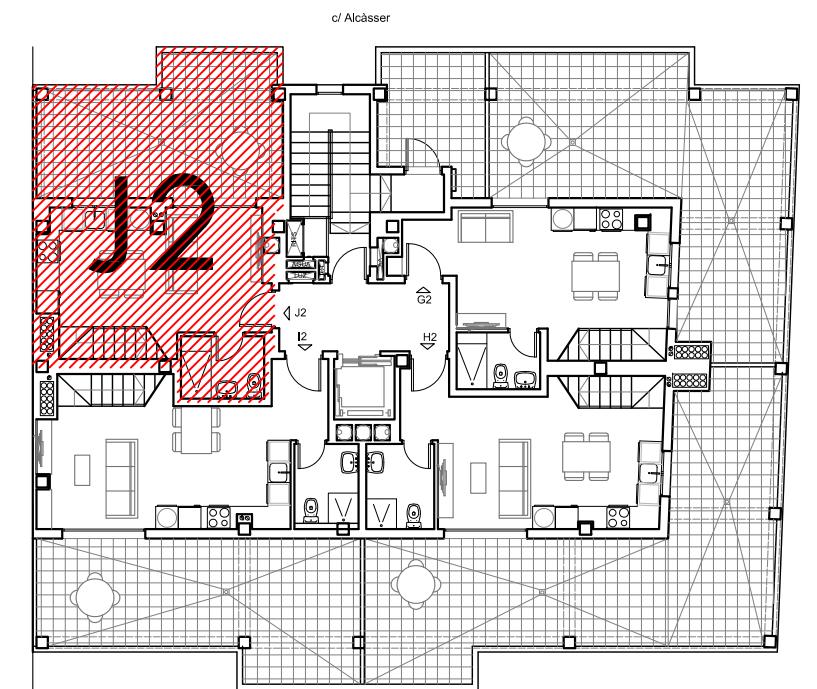
Superficie Útil	54'70 m ² + 21'35 m ² (Terraza)
Superficie Construida	70'00 m ²
P.P.E.C.	10'02 m ²
Total Sup. Constr. con E.C.	80'02 m ²



Planta Primera



Planta Baja



ESCALA GRAFICA: 1/75

