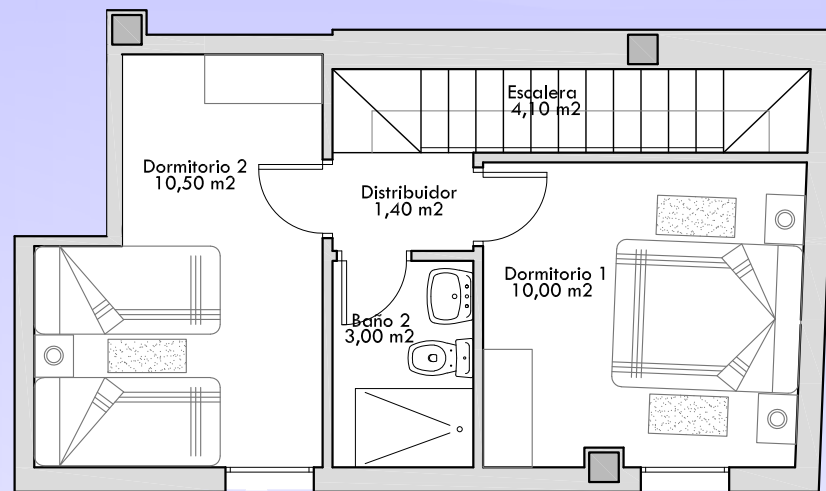
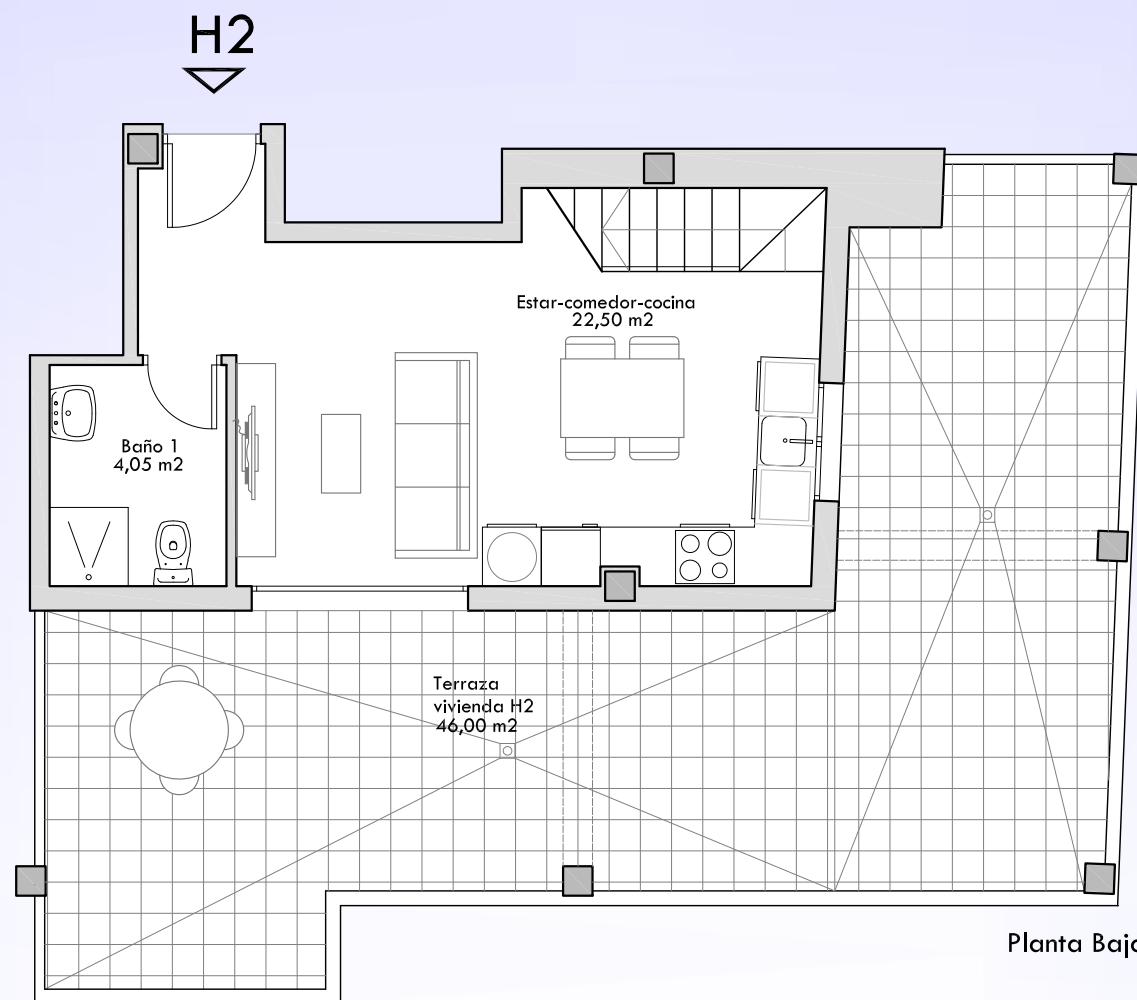


VIVIENDA H2. Planta 6ª y 7ª

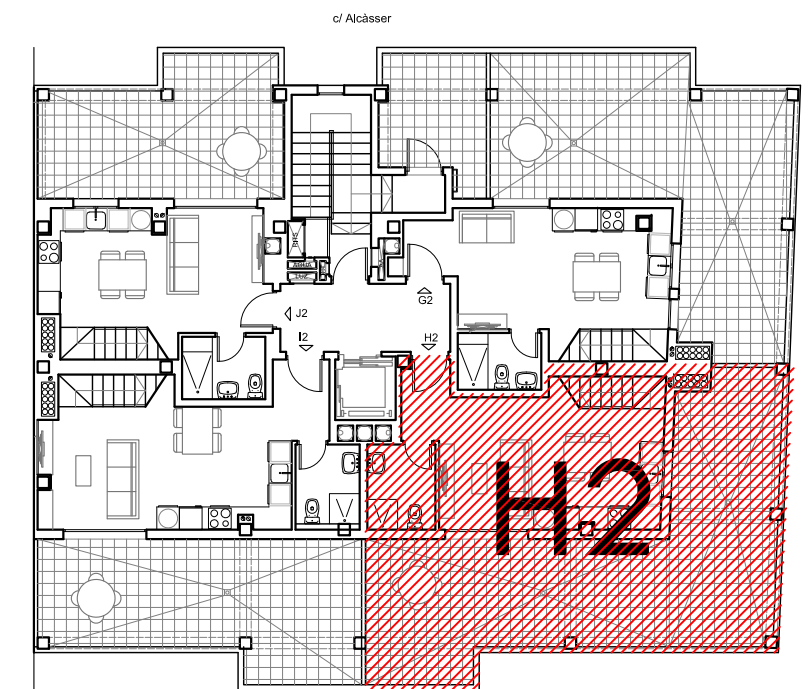
Superficie Útil	55'55 m ² + 46'00 m ² (Terraza)
Superficie Construida	69'27 m ²
P.P.E.C.	9'92 m ²
Total Sup. Constr. con E.C.	79'19 m ²



Planta Primera



Planta Baja



ESCALA GRAFICA: 1/75

