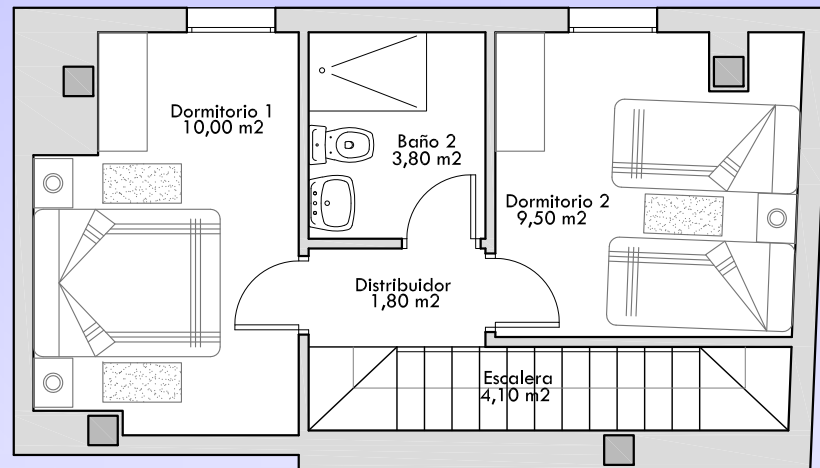
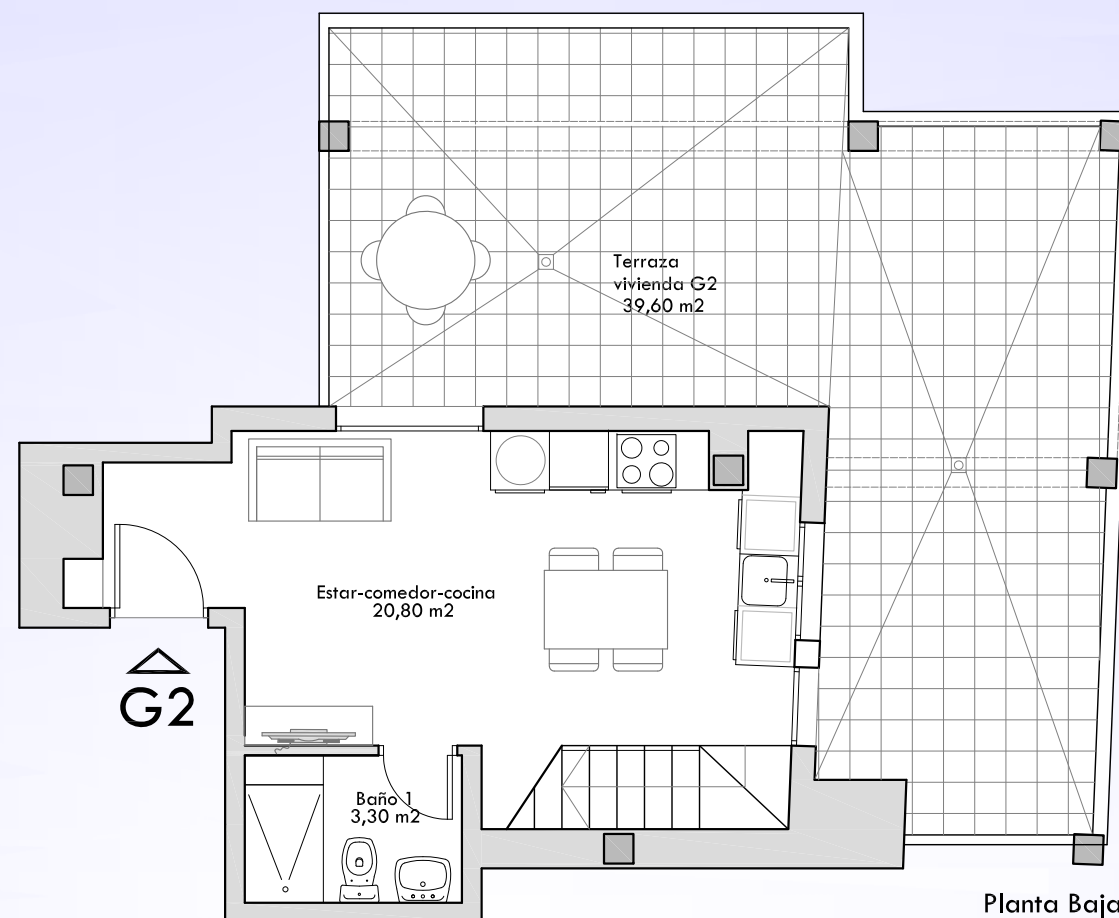


VIVIENDA G2. Planta 6ª y 7ª

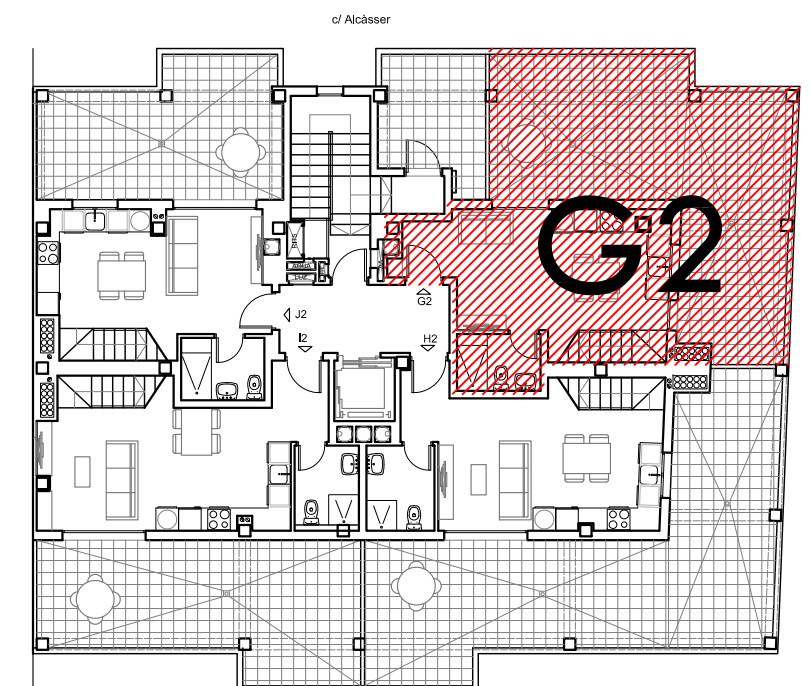
Superficie Útil	53'30 m ² + 39'60 m ² (Terraza)
Superficie Construida	67'18 m ²
P.P.E.C.	9'62 m ²
Total Sup. Constr. con E.C.	76'80 m ²



Planta Primera



Planta Baja



ESCALA GRAFICA: 1/75

