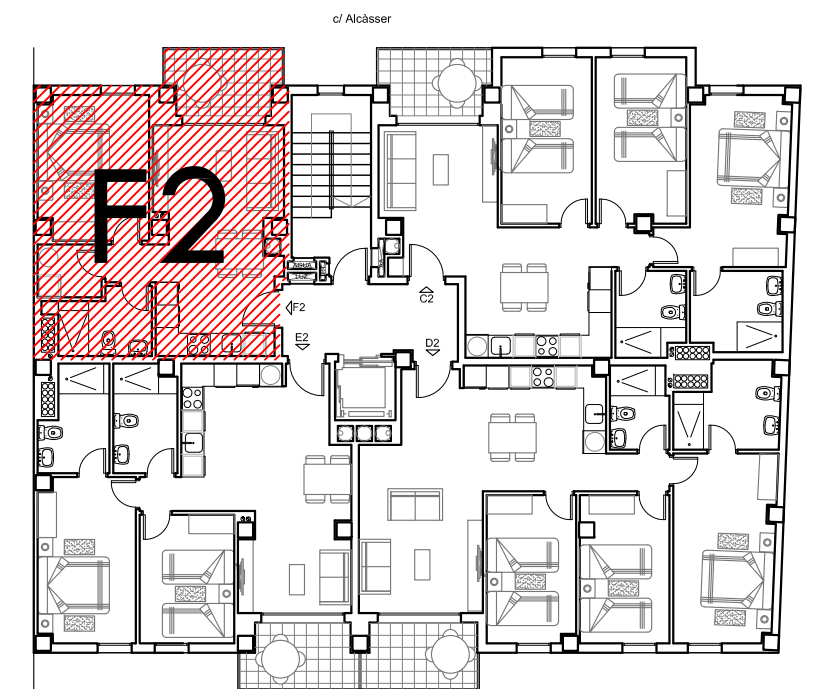
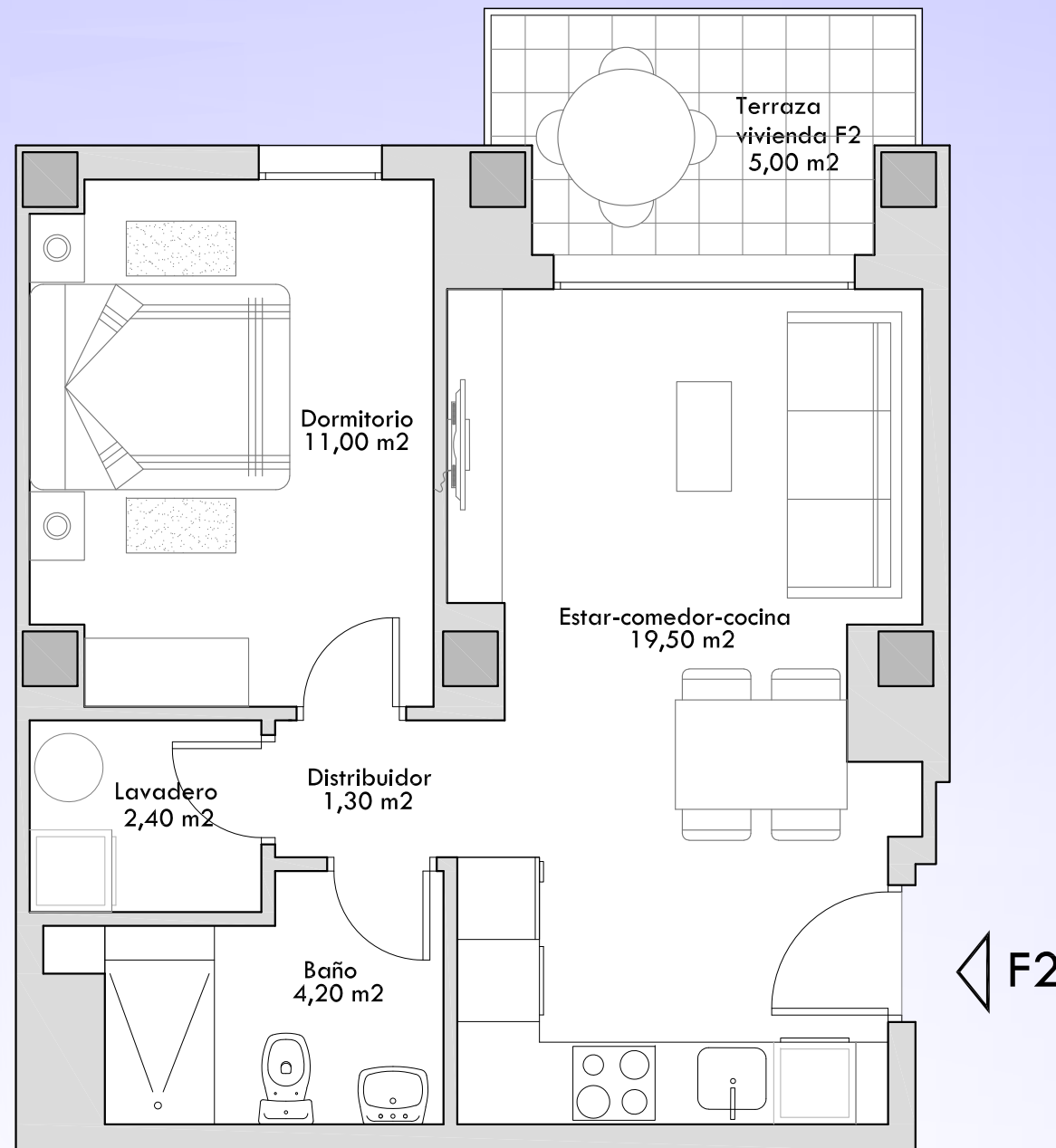


VIVIENDA F2. Planta 1ª a 5ª

Superficie Útil	38'40 m ² + 5'00 m ² (Terraza)
Superficie Construida	46'77 m ²
P.P.E.C.	6'69 m ²
Total Sup. Constr. con E.C.	53'46 m ²



ESCALA GRAFICA: 1/50

